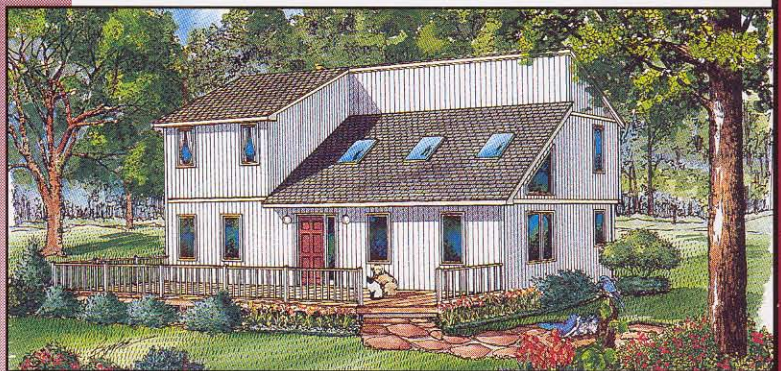


RANCHES



CAPE CHALETS

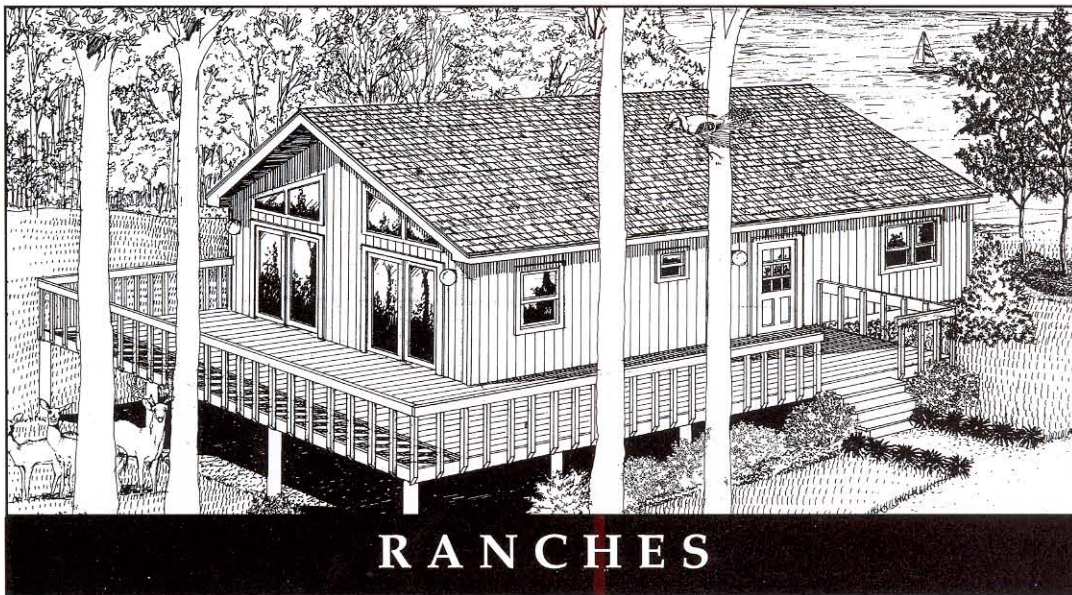


CONTEMPORARY

CHATEAU VILLA SERIES

Designed For Vacation Living

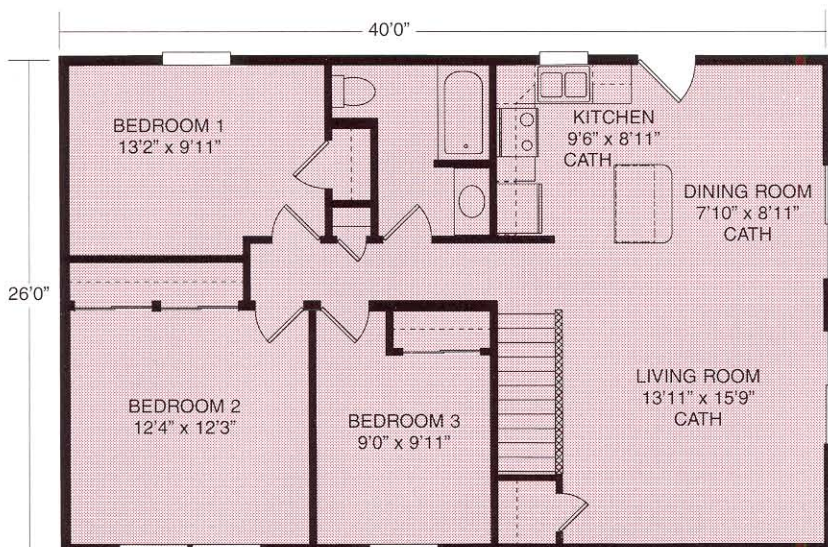
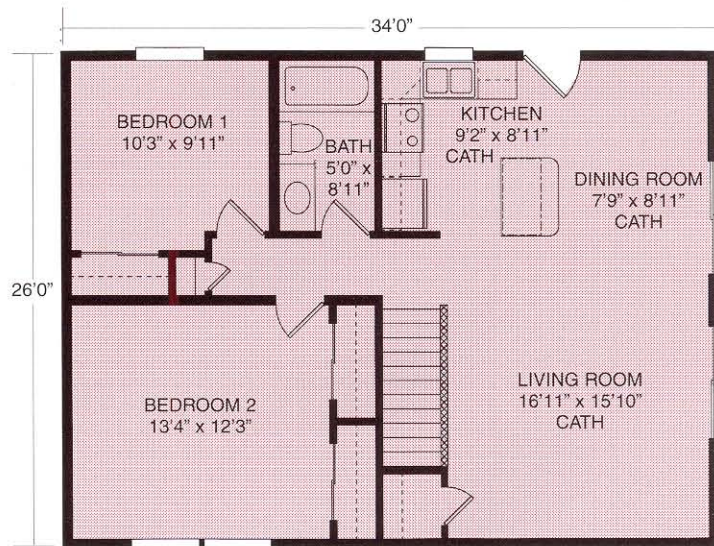




The Skyview

Plan No. 226 ♦ 884 SQ. FT.

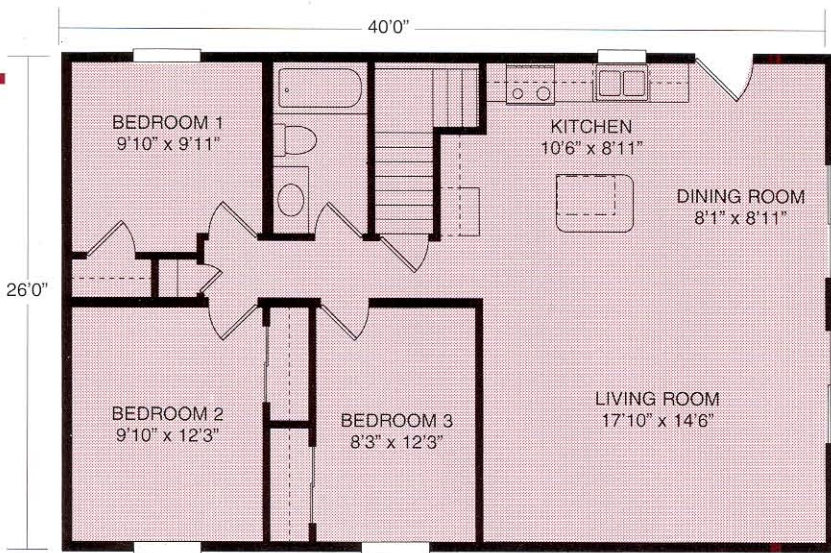
Easy living with large master bedroom with double closets, additional bedroom and full bath. Cathedral ceilings adorn the living room, dining room, and kitchen.



The Mountainview

Plan No. 227 ♦ 1040 SQ. FT.

This plan is perfect for families on the go including three bedrooms, full bath, kitchen with snack bar and the open living room and dining room.

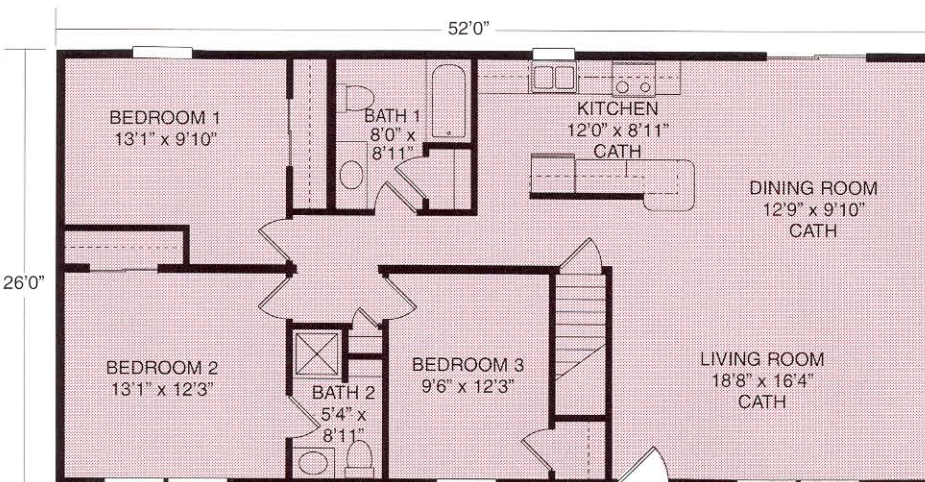
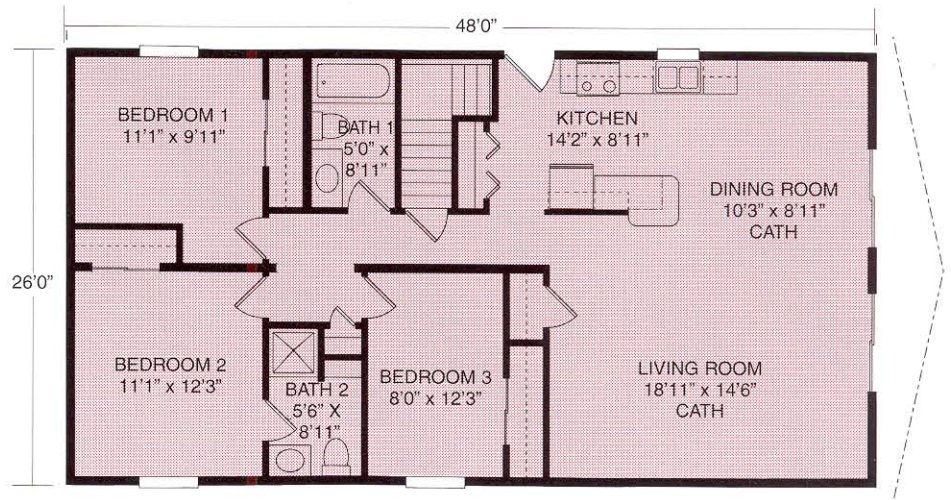


The Valleyview

Plan No. 204 ♦ 1040 SQ. FT.
Spacious living room, open dining room, cathedral ceilings, three bedrooms and a full bath makes this home perfect for families who enjoy open living.

The Longview

Plan No. 212 ♦ 1248 SQ. FT.
All the space you need for an escape to privacy with three spacious bedrooms, three-quarter bath and a full bath. Also wide open living room, dining room and kitchen with snack bar makes this plan a favorite.

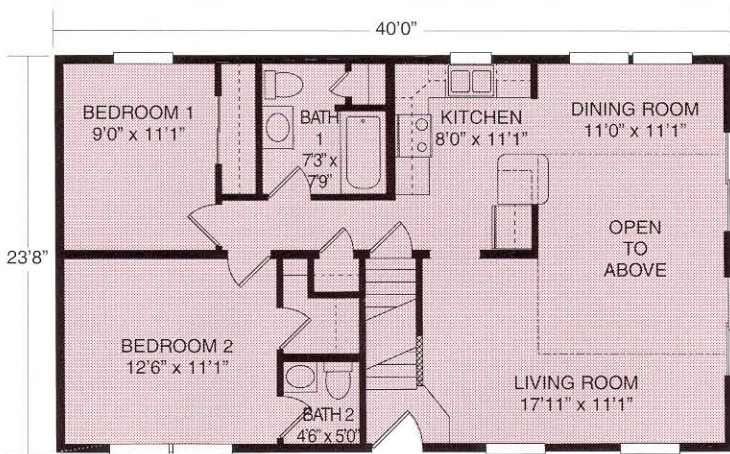


The Lakeside

Plan No. 228 ♦ 1352 SQ. FT.
Cathedral ceilings enhance the tremendous space offered by open, airy living room, dining room, and kitchen area. Master bedroom suite with adjoining bath, two additional bedrooms and a three-quarter bath.



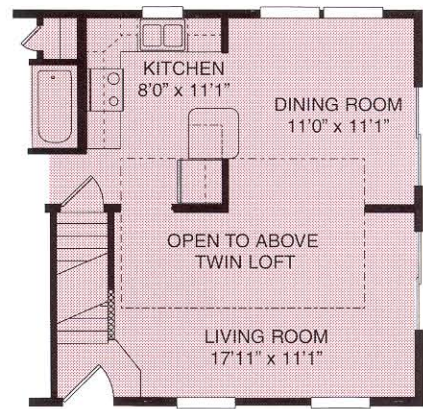
CAPE CHALETS



The Pocono

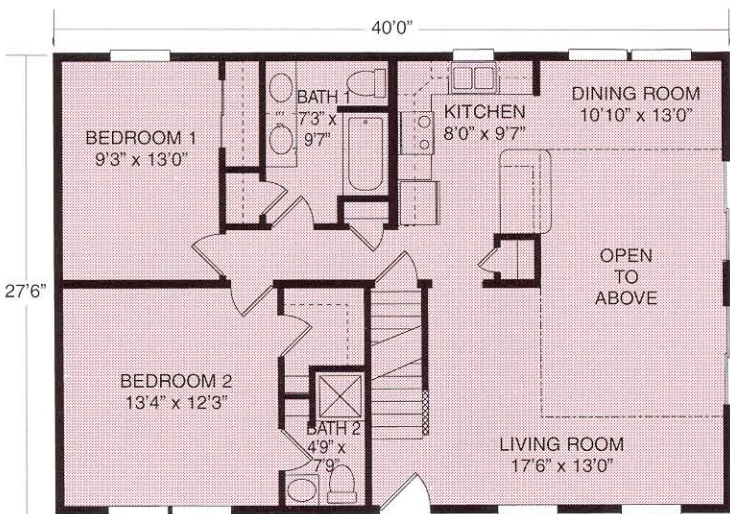
Plan No. 120 ♦ 947 SQ. FT.

The perfect escape with spacious living room and kitchen/dining areas, two bedrooms and bath plus ceiling open to second floor.



Plan No. 120

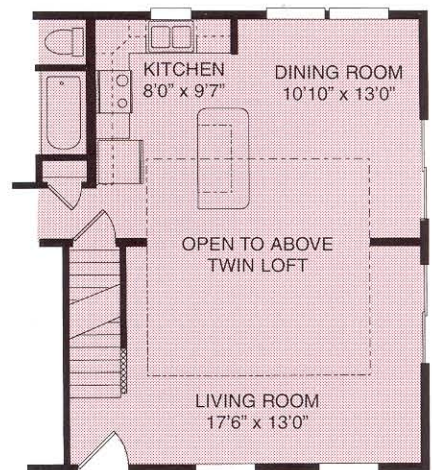
Alternate opening to provide upper twin loft.



The Aspen

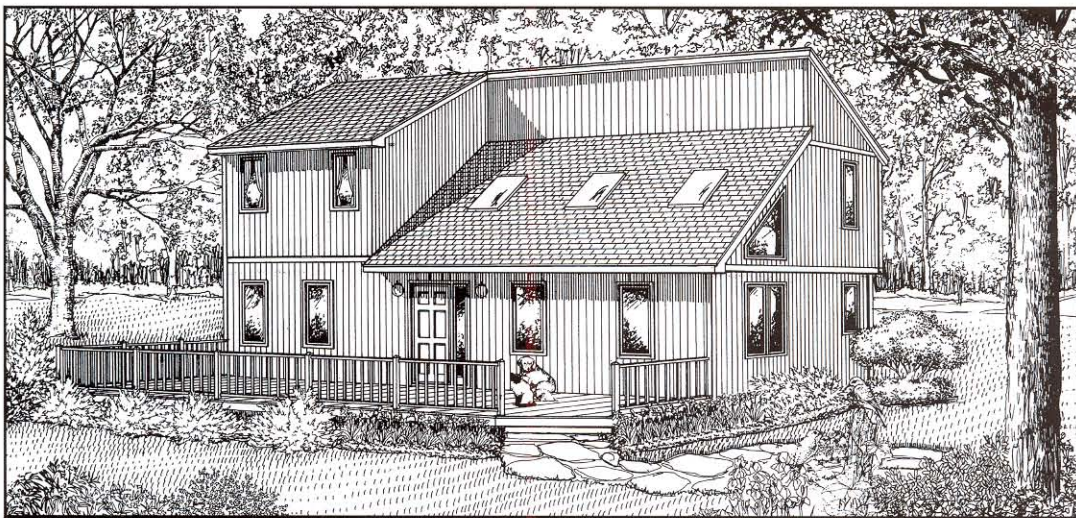
Plan No. 332 ♦ 1100 SQ. FT.

This large and roomy home offers beautiful space. Dramatic loft opens over expansive living room and large kitchen/dining room, master bedroom with adjoining three-quarter bath an additional bedroom and a full bath makes this plan a winner.

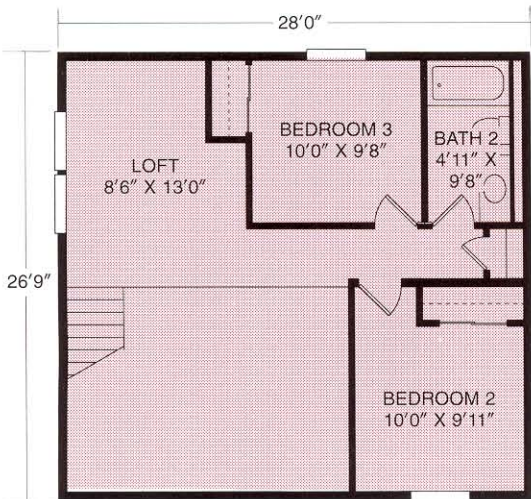


Plan No. 332

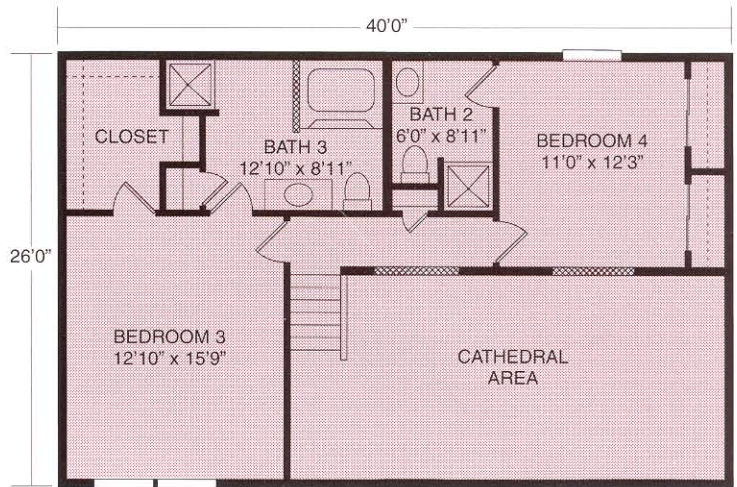
Alternate opening to provide upper twin loft.



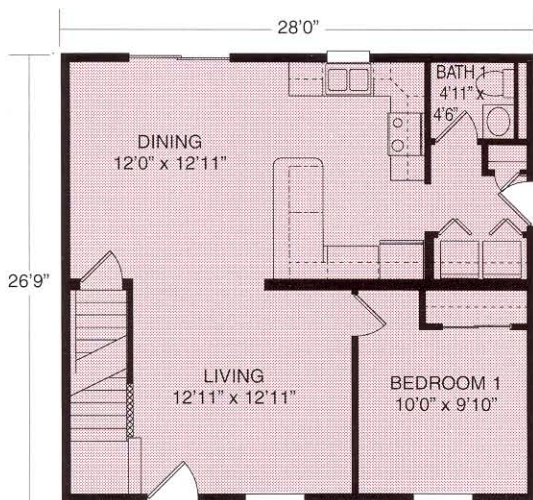
CONTEMPORARY



Upper Level



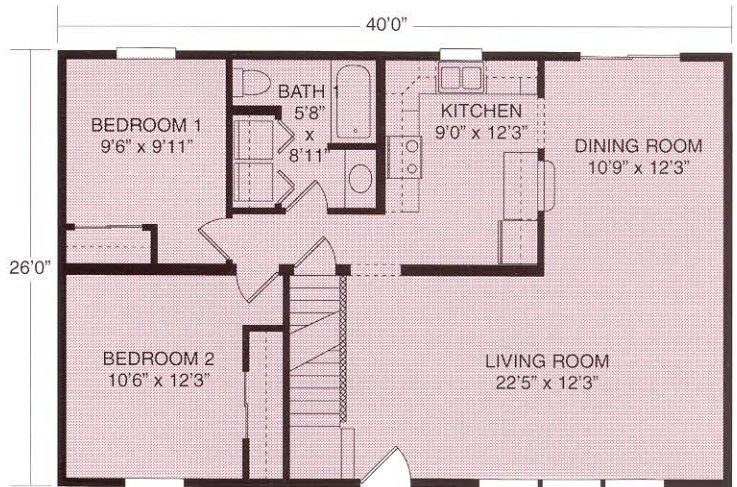
Upper Level



The Benton

Plan No. 502 ♦ 1264 SQ. FT.

A vacation home with great amenities including three bedrooms, one and one half baths, kitchen, utility room, loft overlooking large, open living room and dining room area.



The Huntington

Plan No. 509 ♦ 1727 SQ. FT.

Contemporary flair and exceptional living in this beautifully appointed home with master bedroom suite featuring walk-in closet and luxurious bath, stunning open loft above spacious living room, three additional bedrooms, and one and three-quarter baths.