

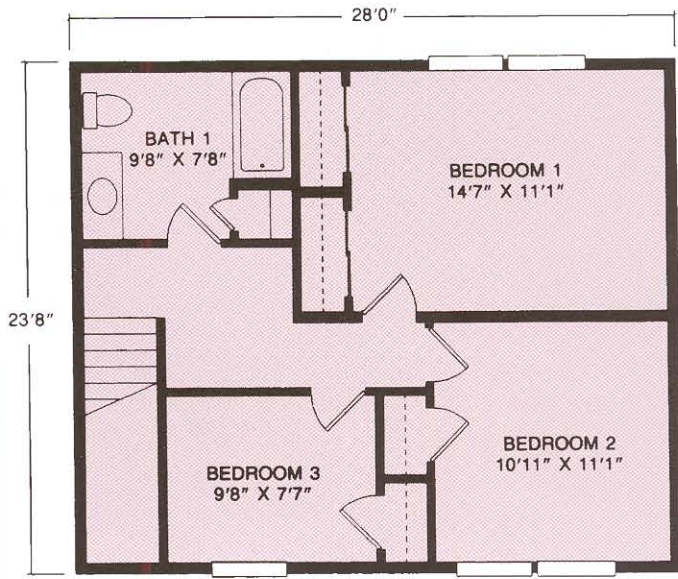
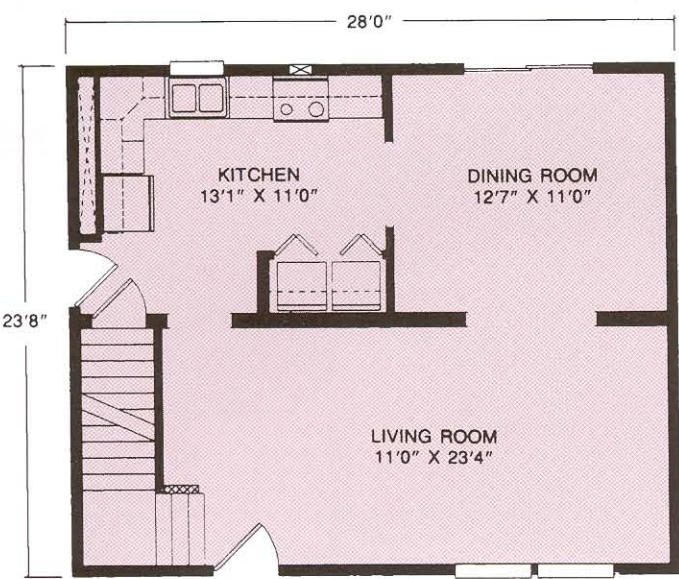


TWO STORY PLANS

DESIGNER SERIES

Come Home To Comfort and Quality

**Superior
Builders**

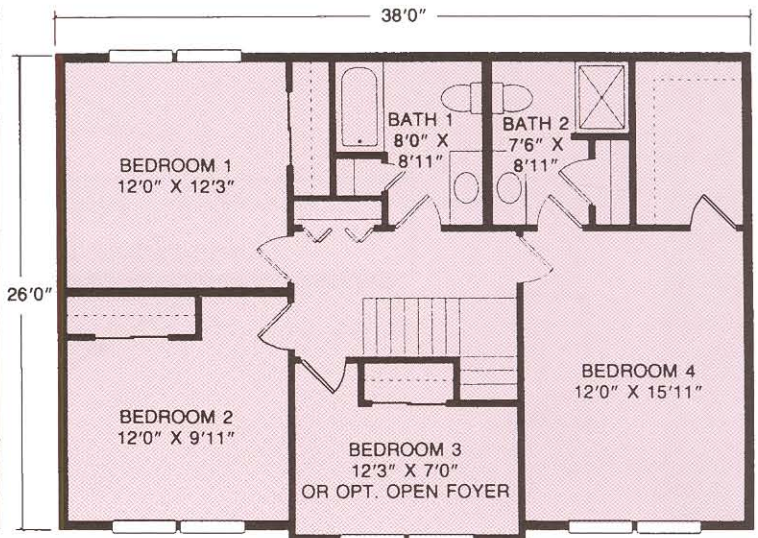
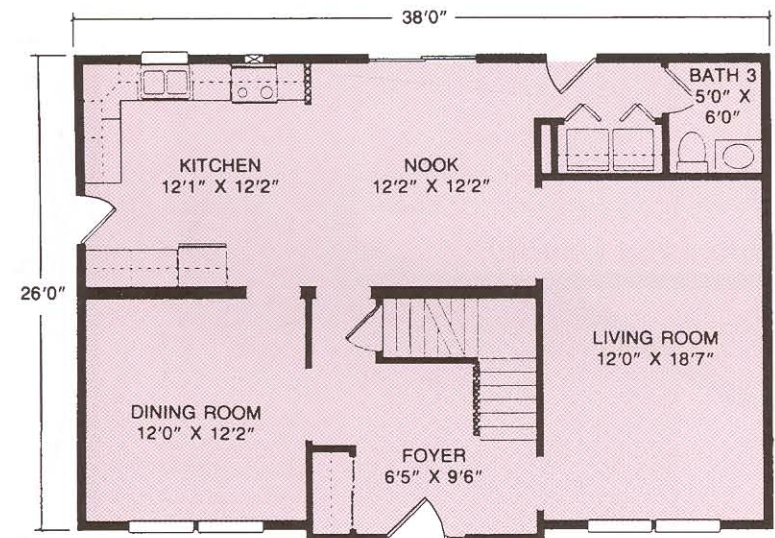


The Norwood

Plan No. 501 ■ 1325 SQ. FT.

Offering space and privacy for family or guests, this home features three large bedrooms with generous closet space, spacious bath and expansive living room.

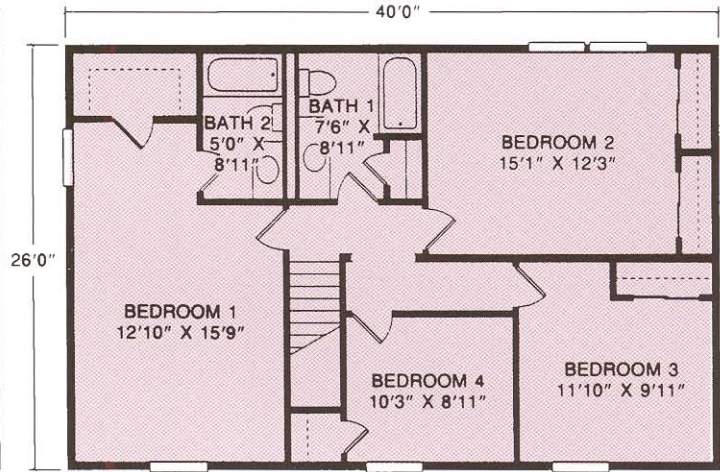
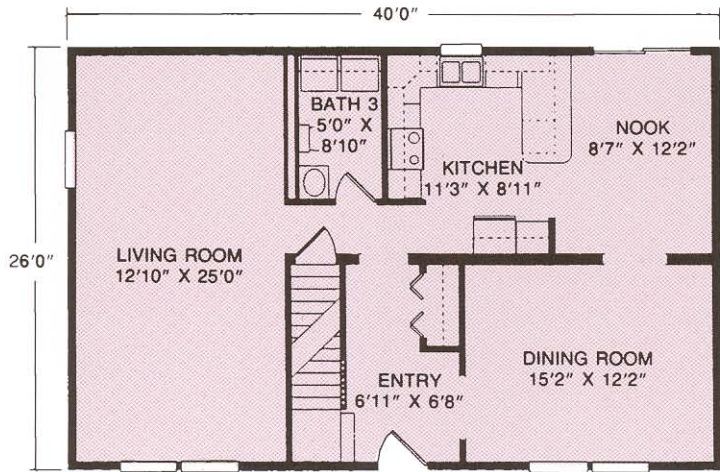
Also available in 26' width.



The Bridgeport

Plan No. 504 ■ 1976 SQ. FT.

Elegant space for living and entertaining with grand master bedroom suite with tremendous walk-in closet and private bath. Three additional bedrooms, and expansive formal living room. Also available in 27'6" width.

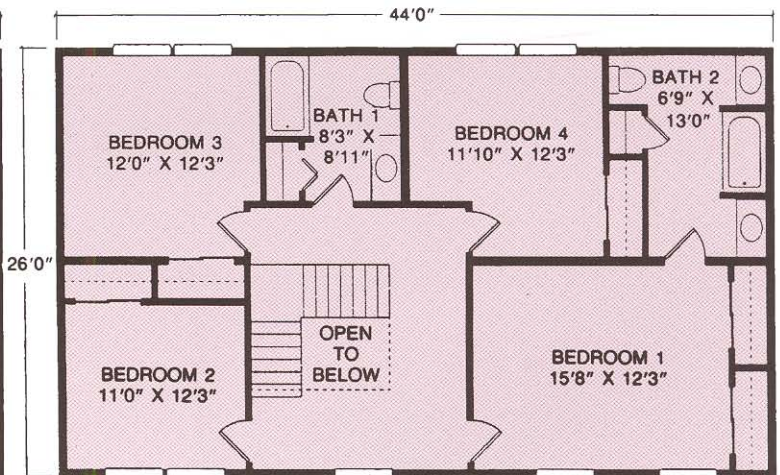
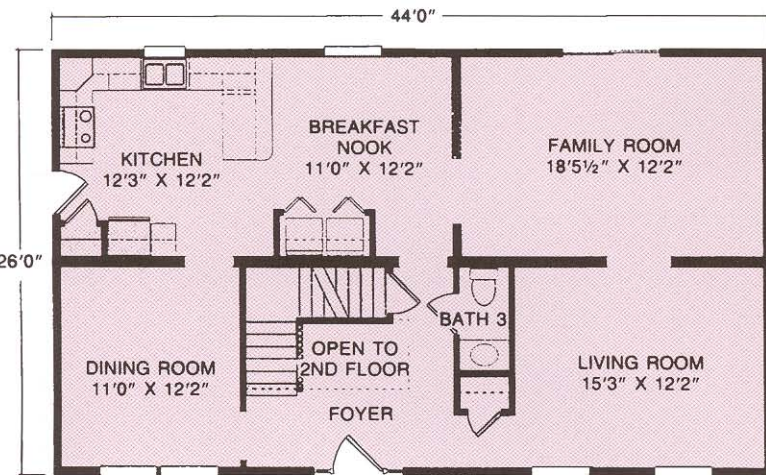


The Chatwood

Plan No. 505 ■ 2080 SQ. FT.

Special features and space you'll love with expansive master bedroom suite with private bath and large walk-in closet, three additional bedrooms, one and one half baths.

Also available in 27'6" width.

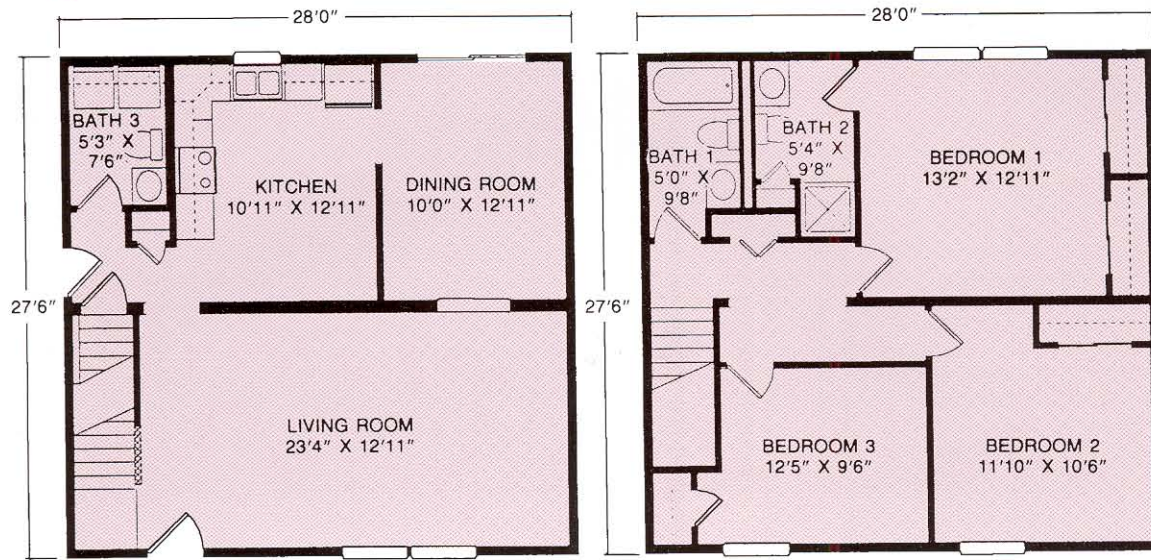


The Crestmont

Plan No. 506 ■ 2288 SQ. FT.

A true "family" home with immense master bedroom with adjoining bath area that features his and her bath vanities, three additional bedrooms, one and one half baths, first floor laundry area, large kitchen and breakfast nook.

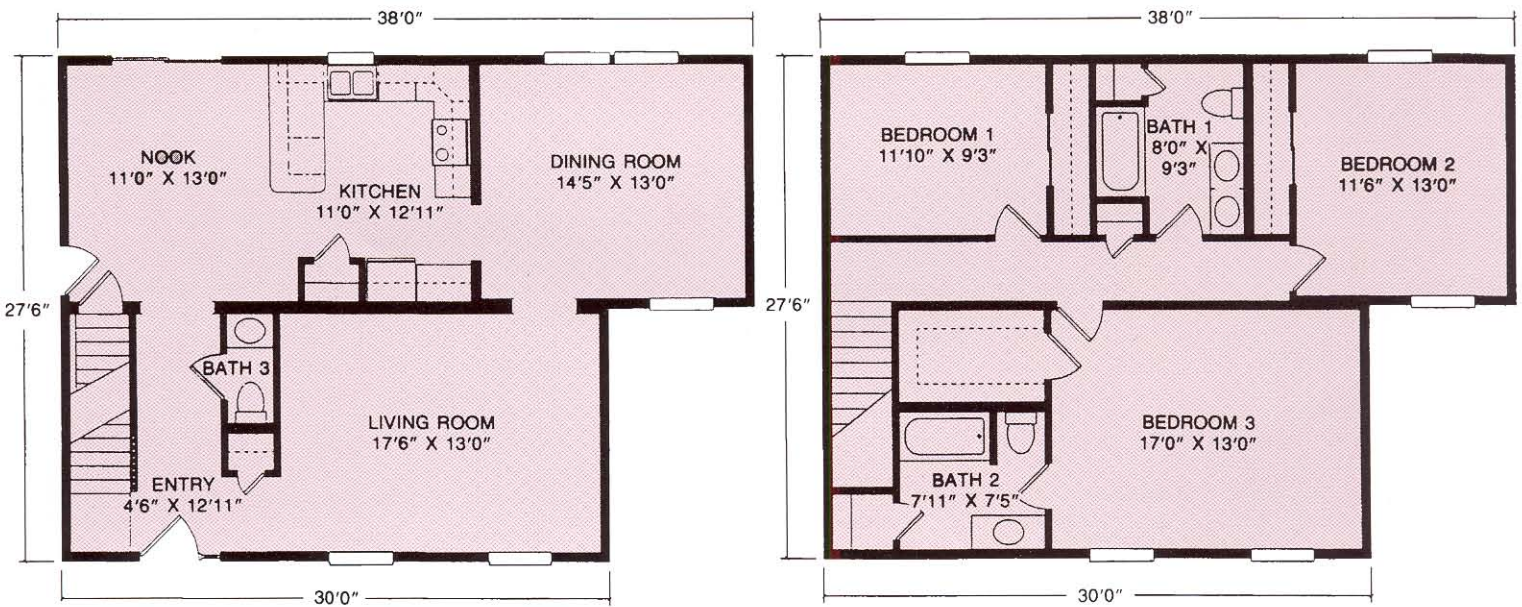
Also available in 27'6" width.



The Franklin

Plan No. 507 ■ 1540 SQ. FT.

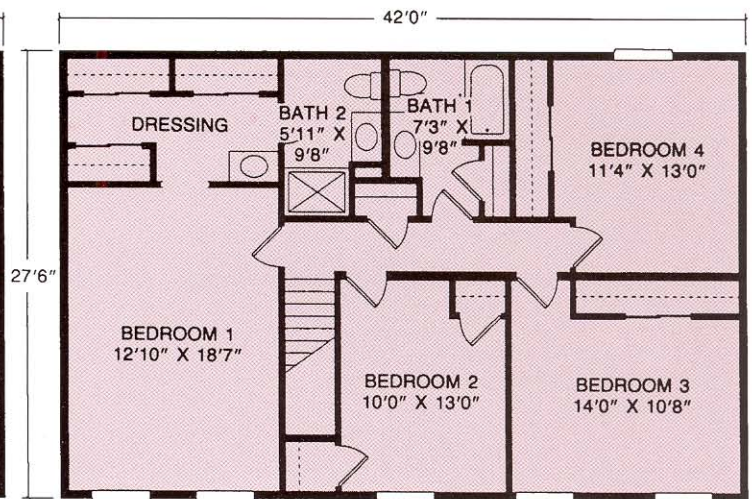
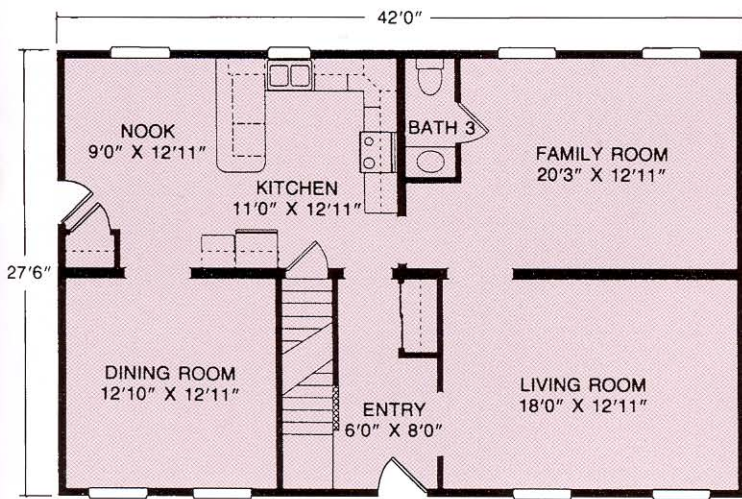
Convenience and features that make a house a home, such as large master bedroom with three quarter bath, two additional bedrooms, one and one half baths, with first floor laundry area, spacious kitchen, and formal dining room.



The Jamestown

Plan No. 510 ■ 1870 SQ. FT.

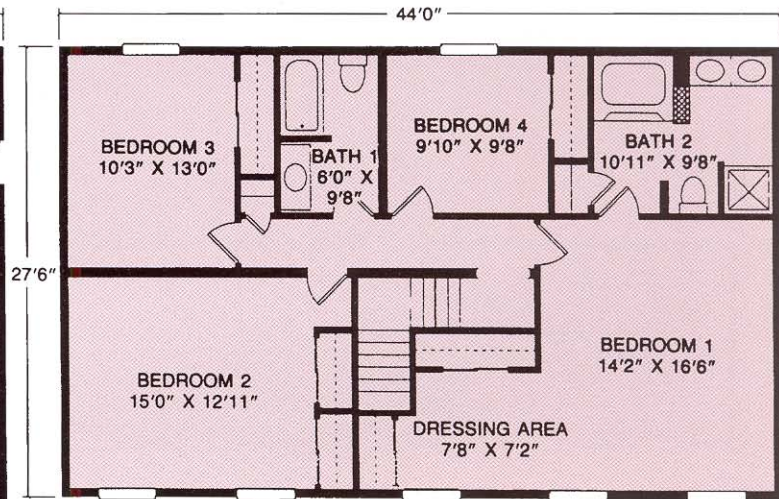
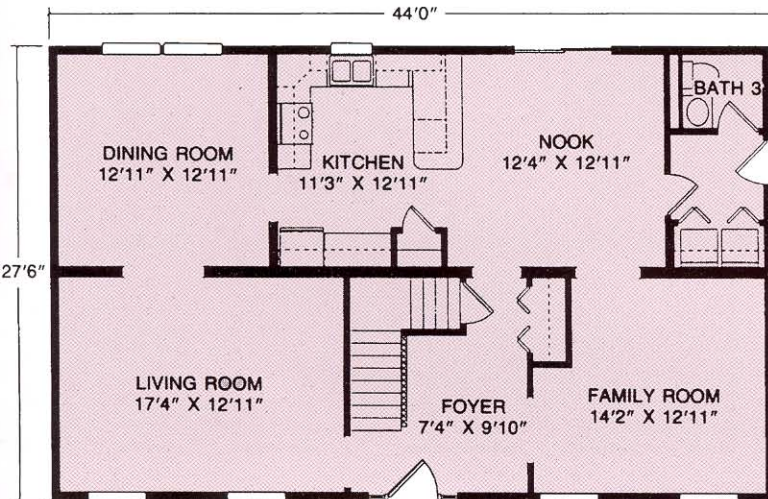
Featuring large master bedroom suite with private bath and walk-in closet, two additional bedrooms, one and one half baths, and formal dining room.



The Gettysburg

Plan No. 512 ■ 2310 SQ. FT.

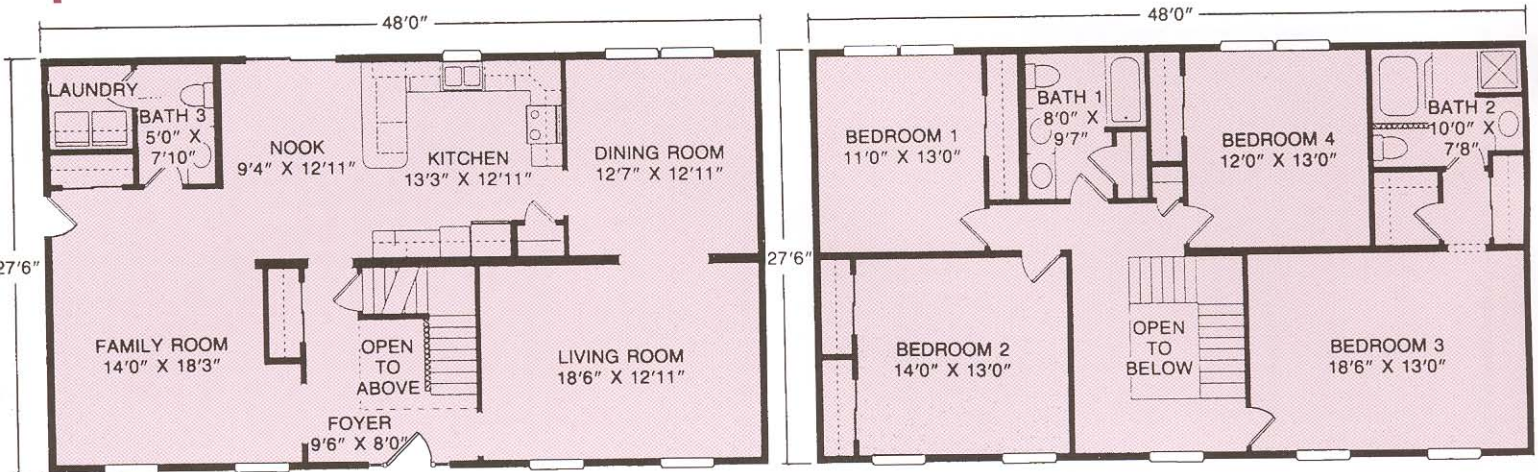
Comfort and convenience with expansive master bedroom suite with adjoining bath and dressing area, three additional bedrooms, one and one half baths, large kitchen, family room.



The Williamsburg

Plan No. 503 ■ 2420 SQ. FT.

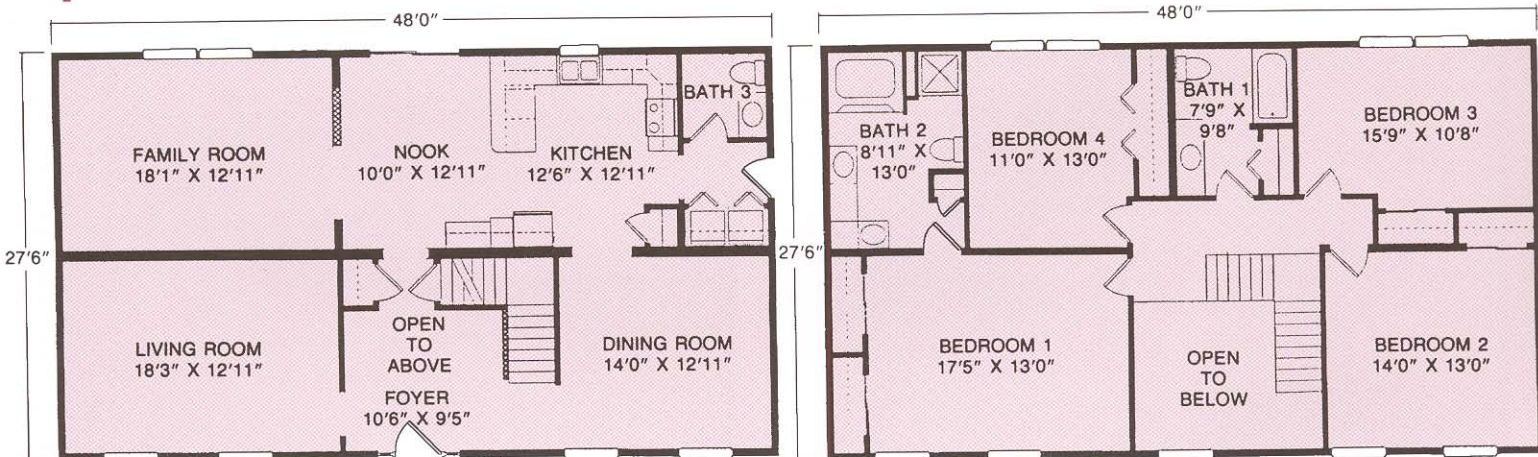
Space for the growing family, super master bedroom suite with private bath and dressing/sitting area, one and one half baths, three additional bedrooms, spacious family room and large, sunny breakfast room.



The Martinsburg

Plan No. 513 ■ 2640 SQ. FT.

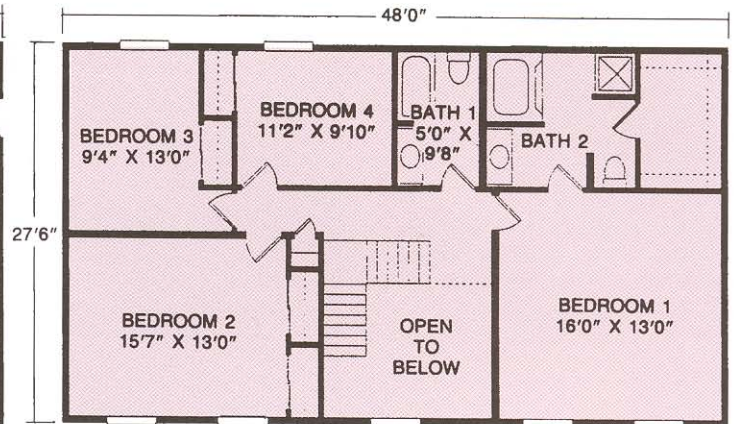
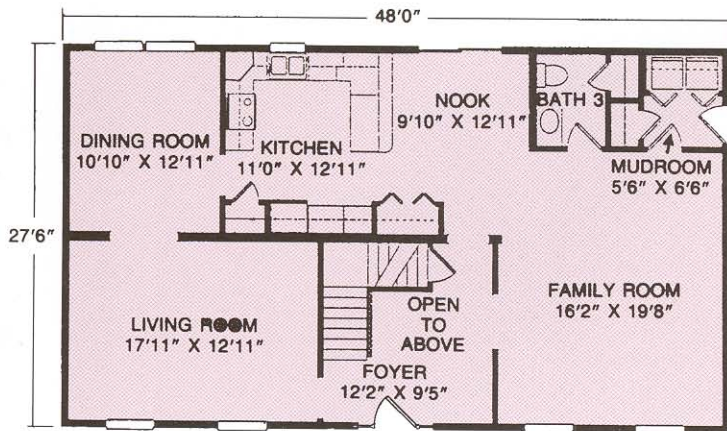
Come home to luxurious space with grand master suite featuring walk-in closet and large private bath, one and one half baths, three additional bedrooms, family room, and formal dining room.



The Oakmont

Plan No. 514 ■ 2640 SQ. FT.

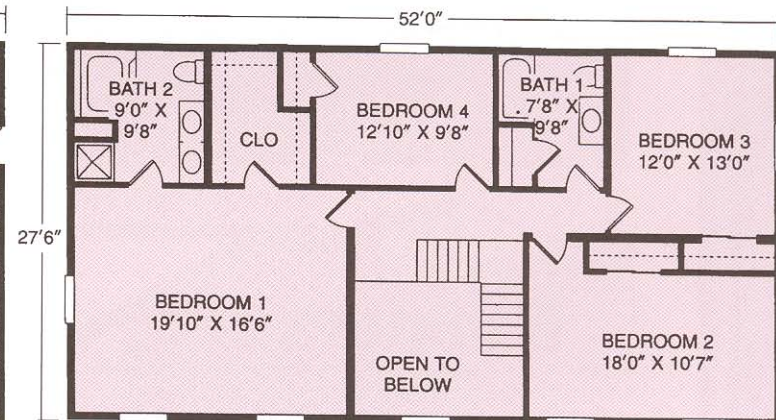
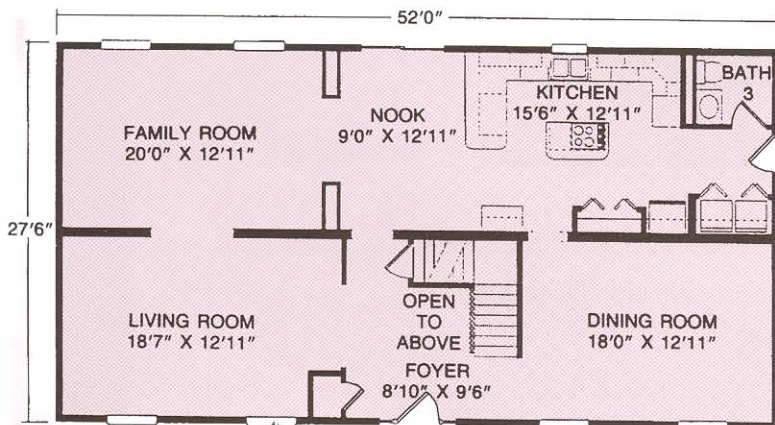
Featuring an elegant open foyer, family room, large kitchen/breakfast area, formal dining room, massive master bedroom with private deluxe bath, one and one half additional bathrooms with three additional bedrooms.



The Oxford

Plan No. 515 ■ 2640 SQ. FT.

So many facets make this home a gem, featuring grand private bath, three additional bedrooms, one and one half baths, elegant staircase open to foyer, convenient first floor laundry.



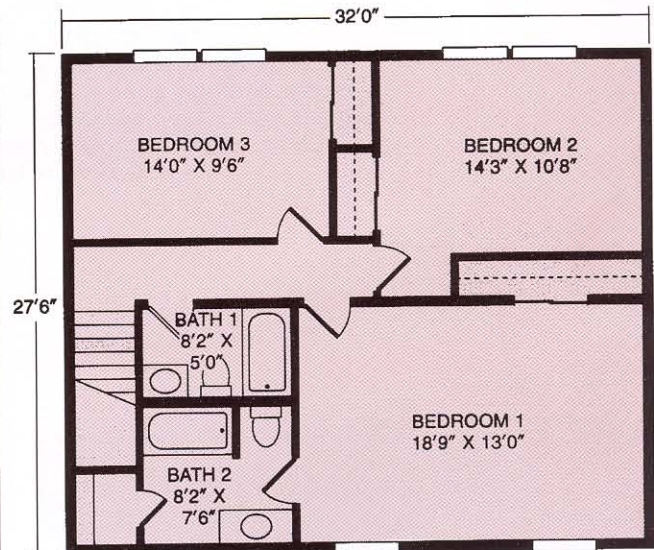
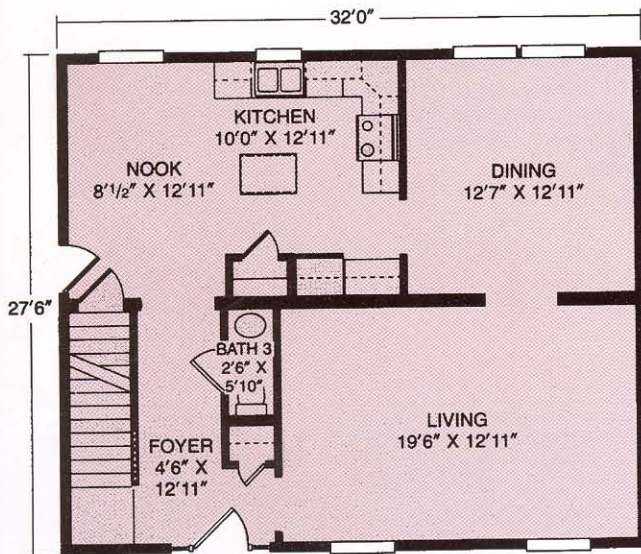
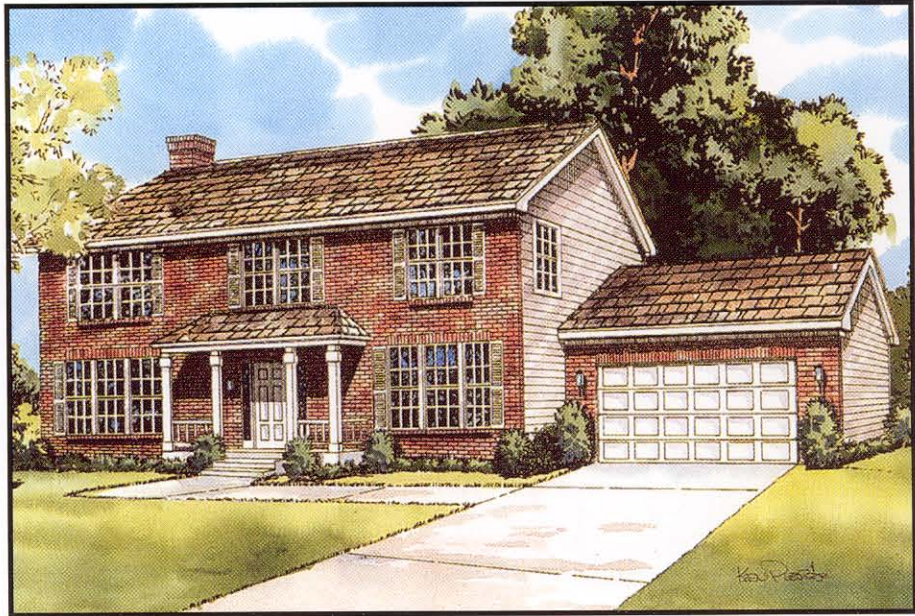
The Rutledge

Plan No. 516 ■ 2860 SQ. FT.

The ultimate in luxurious convenience, featuring a grand master bedroom suite with walk-in closet and deluxe private bath, three additional spacious bedrooms, one and one half baths, family room, welcoming entrance open foyer.

The Freeport

Plan No. 508 ■ 1760 SQ. FT.
 Welcome home to comfort with a master bedroom with full bath, two additional bedrooms, one and one half baths, large kitchen with island, formal dining room, elegant foyer and spacious living room.



Superior Builders

A DIVISION OF MUNCY HOMES, INC.
 1565 PA ROUTE 442 EAST,
 MUNCY, PA 17756
 (570) 546-2264
 www.superiorbuilders.com

MEMBER:



THE NATIONAL ASSOCIATION OF HOMEBUILDERS

MEMBER:



Due to our continuing program of Product Improvement, Plans, Specifications, Materials and prices are subject to change without notice. Renderings and floor plans are promotional illustrations that approximate size and depict optional or suggested features. 10M KBEPT 02/05

Your Builder/Developer:

THE BUILDER/DEVELOPER IS AN INDEPENDENT BUSINESSMAN, NOT AN AGENT OF SUPERIOR BUILDERS. From time to time, Builder/Developer may perform service work at the request of Superior Builders, but in doing so Builder/Developer is still an independent contractor and is alone responsible for the quality of his work. SUPERIOR BUILDERS SHALL HAVE NO RESPONSIBILITY OR LIABILITY FOR ANY ACT OR OMISSION OF BUILDER/DEVELOPER OR ANY MATERIAL PROVIDED BY BUILDER/DEVELOPER, UNDER ANY CIRCUMSTANCES.