

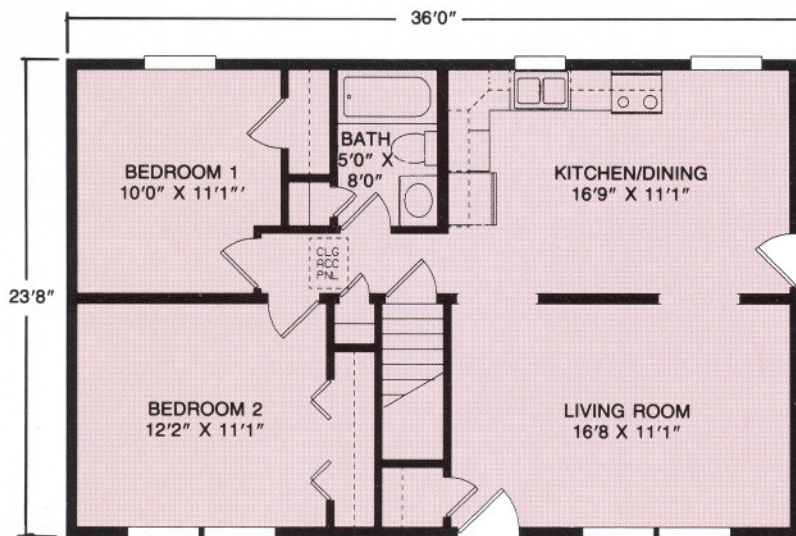


RANCH PLANS

KEYSTONE SERIES

Come Home to Comfort and Quality

**Superior
Builders**



The Cameron

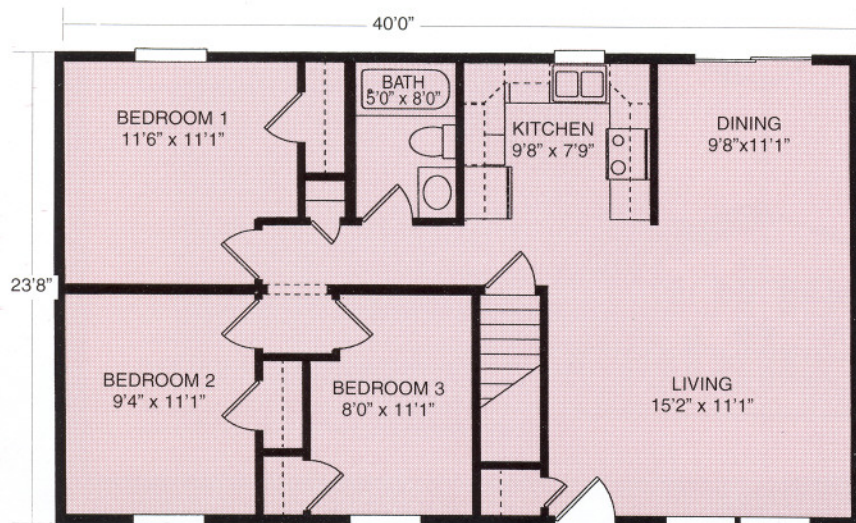
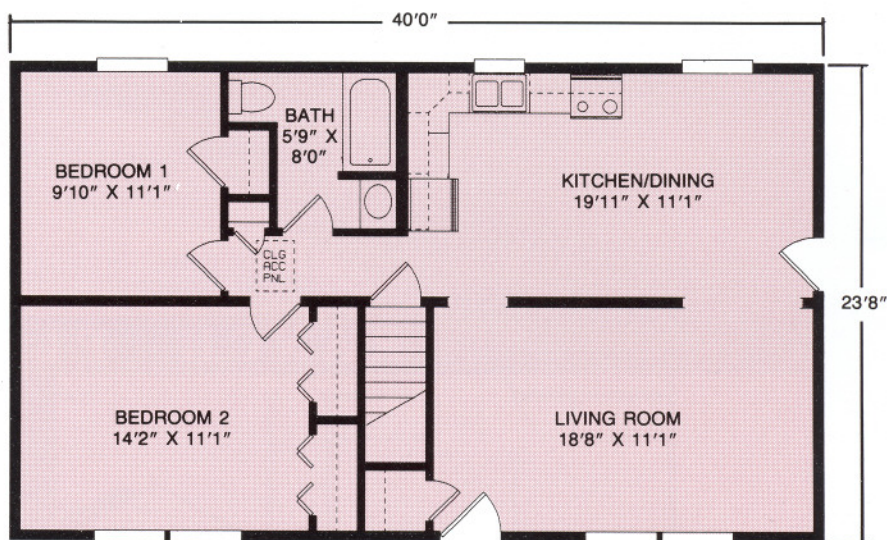
Plan No. 141 ■ 852 SQ. FT.

Welcome home to charming simplicity, featuring two bedrooms, full bath, large living room and bright, open dining room/kitchen area. Also available in 26' and 27'6" width.

The Clinton

Plan No. 142 ■ 946 SQ. FT.

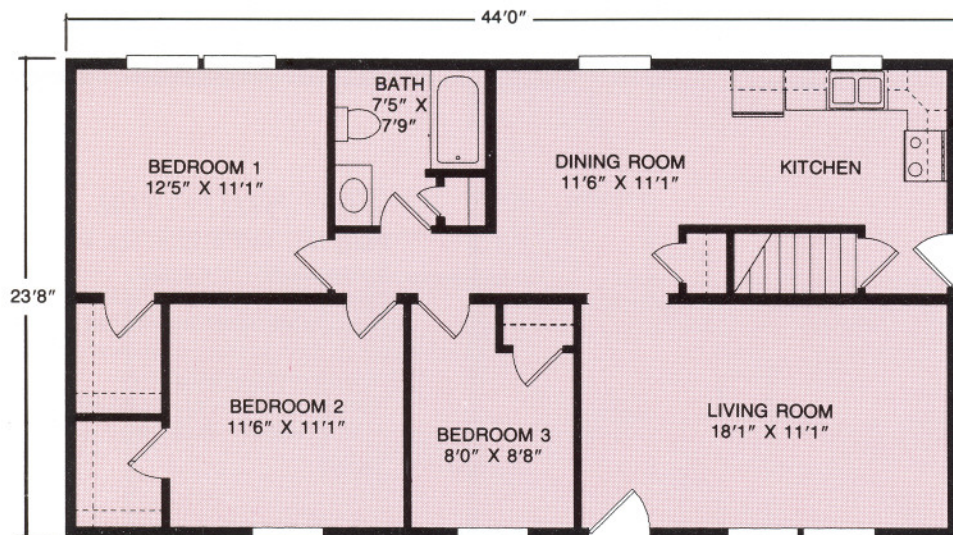
Two spacious bedrooms with a large living room and combination kitchen/dining room make this the ideal starter home. Also available in 26' and 27'6" width.



The Columbia

Plan No. 143 ■ 946 SQ. FT.

Everyone's a winner with this home that features three bedrooms, a dining room and large living room make this the ideal starter home. Also available in 26' and 27'6" width.

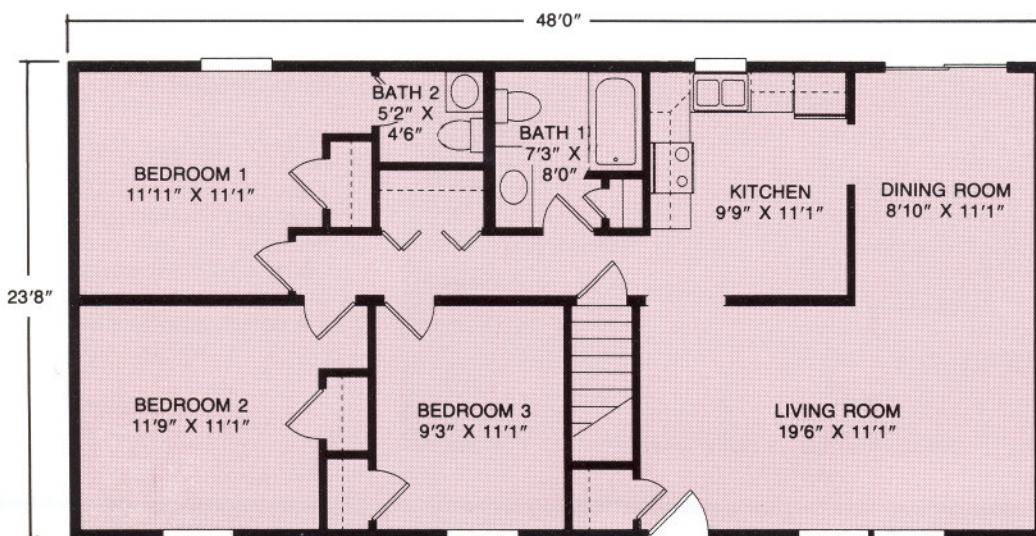
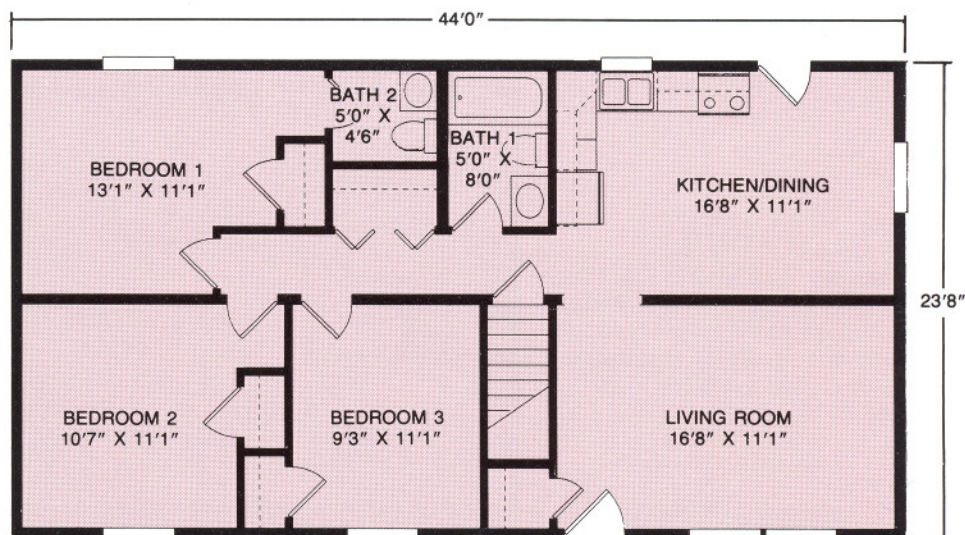


The Franklin

Plan No. 144 ■ 1041 SQ. FT.
 Enjoy comfortable living with three bedrooms with walk-in closets, large bath, and spacious living room, dining area and kitchen. Also available in 26' and 27'6" width.

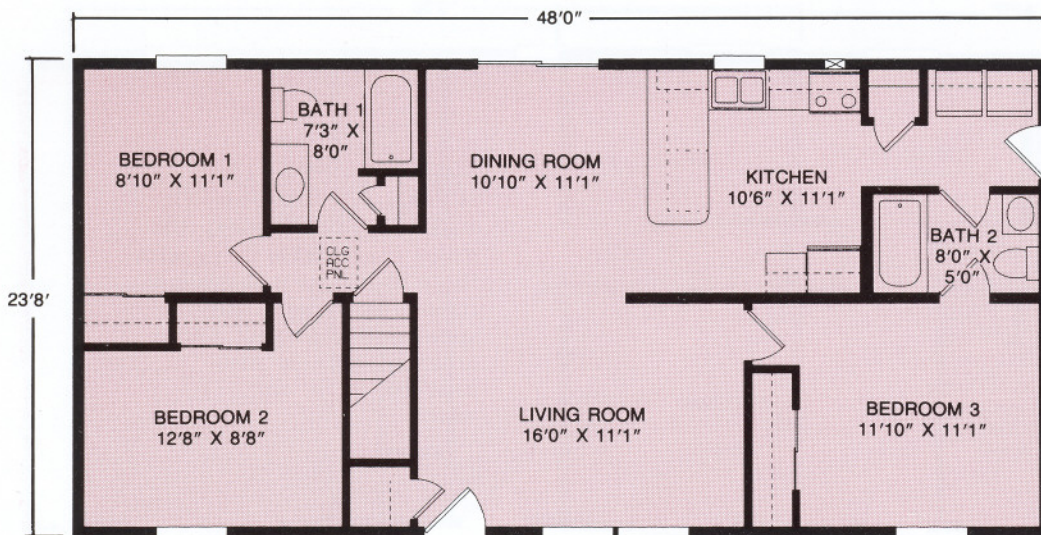
The Lehigh

Plan No. 145 ■ 1041 SQ. FT.
 Space and privacy with master bedroom suite with private bath, plus two additional bedrooms with an additional bathroom. Also available in 26' and 27'6" width.



The Monroe

Plan No. 146 ■ 1136 SQ. FT.
 Generous space for family or visitors. Master bedroom suite with private bath, plus two additional bedrooms and a full bath. Also available in 26' and 27'6" width.

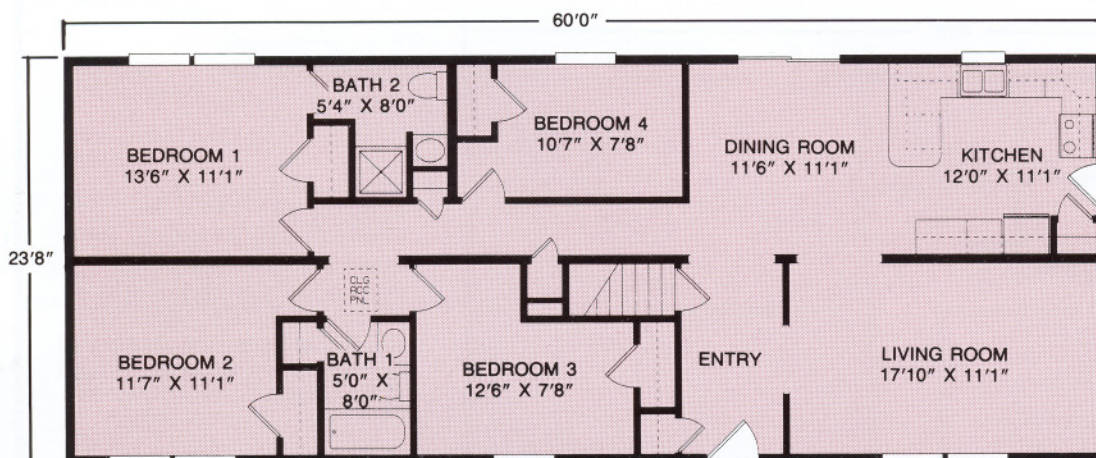
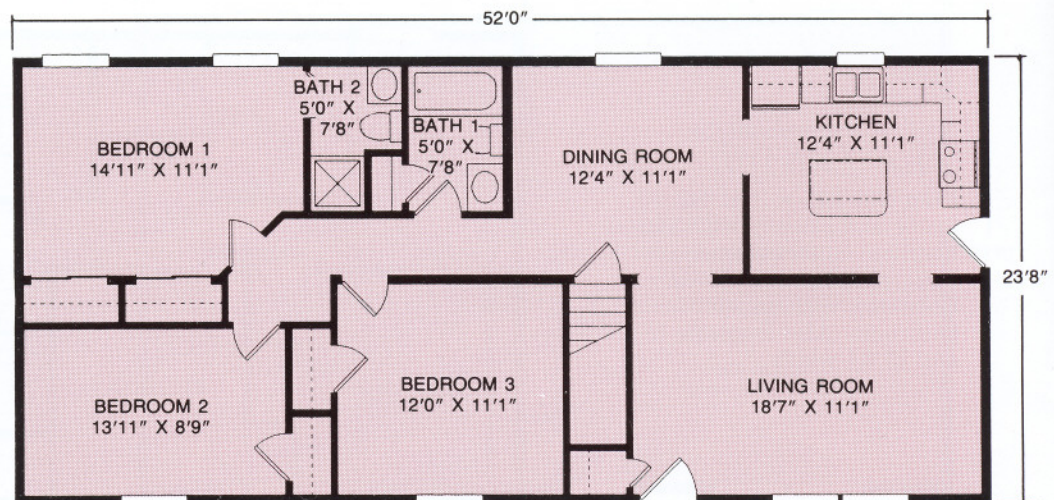


The Sullivan

Plan No. 147 ■ 1136 SQ. FT.
 Spacious kitchen with convenient adjoining utility room, plus spacious dining room and living room perfectly complement your casual lifestyle or formal entertaining. Also available in 26' and 27'6" width.

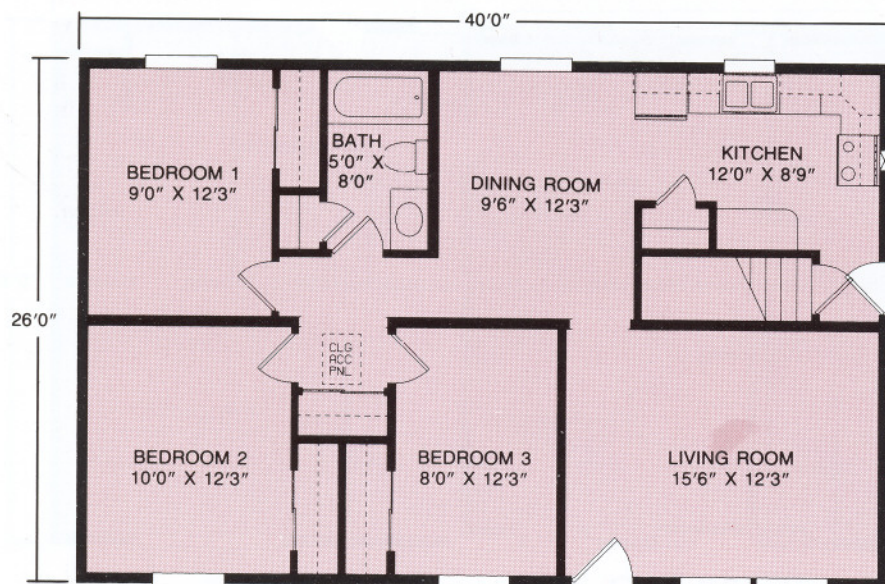
The Tioga

Plan No. 148 ■ 1230 SQ. FT.
 Formal living room and dining room are perfect for relaxing with the family or entertaining guests. Also available in 26' and 27'6" width.



The Wyoming

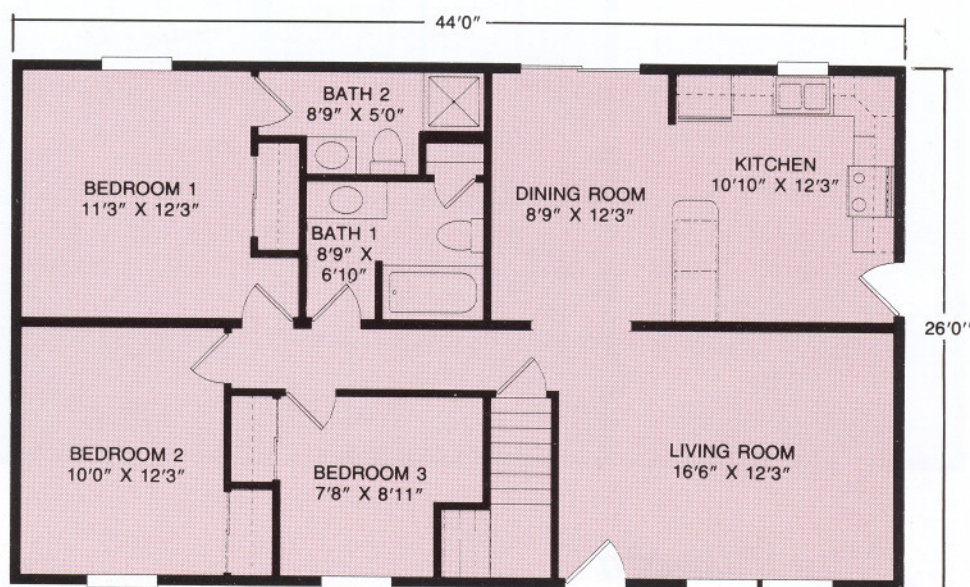
Plan No. 149 ■ 1420 SQ. FT.
 Cozy and comfortable best describe this four bedroom ranch with welcoming foyer, living room, dining room and 1 3/4 baths. Also available in 26' and 27'6" width.



The Allegheny

Plan No. 261 ■ 1040 SQ. FT.

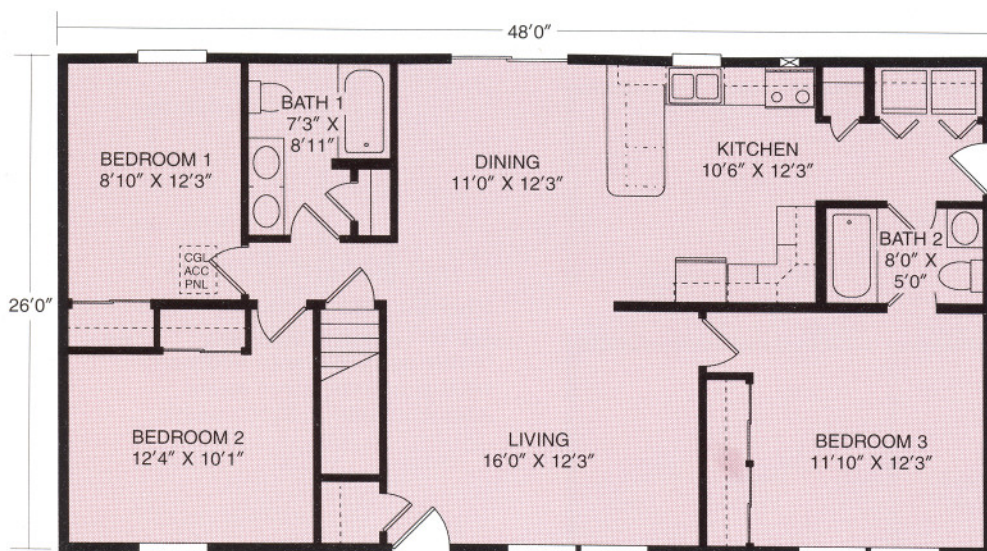
A charming home design featuring three large bedrooms with generous closet space. Also available in 27'6" width.



The Clarion

Plan No. 262 ■ 1144 SQ. FT.

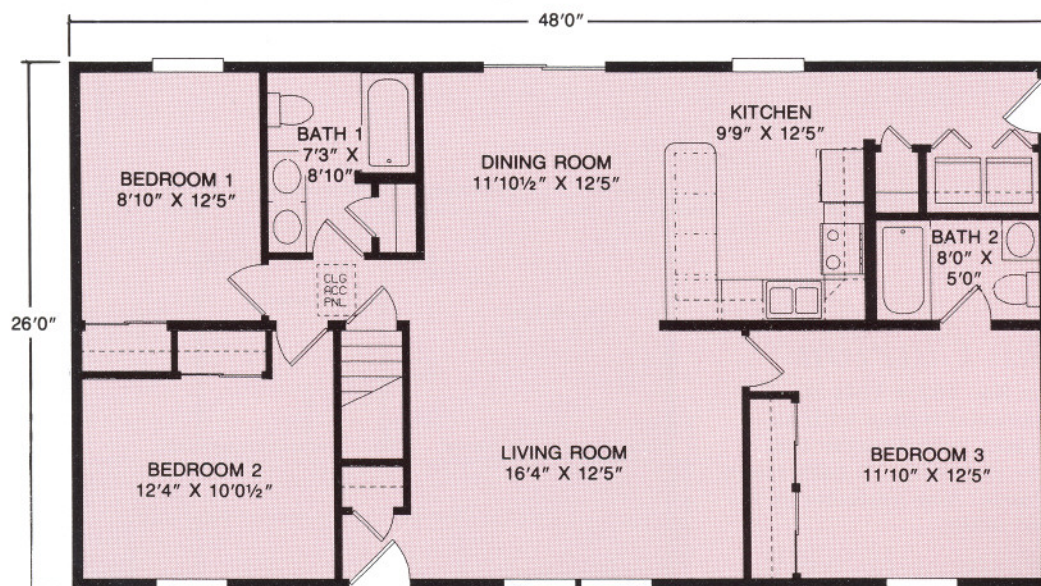
Traditional styling with an efficient layout makes this three bedroom, 1¾ bath ranch a classic. Also available in 27'6" width.



The Delaware

Plan No. 263 ■ 1248 SQ. FT.

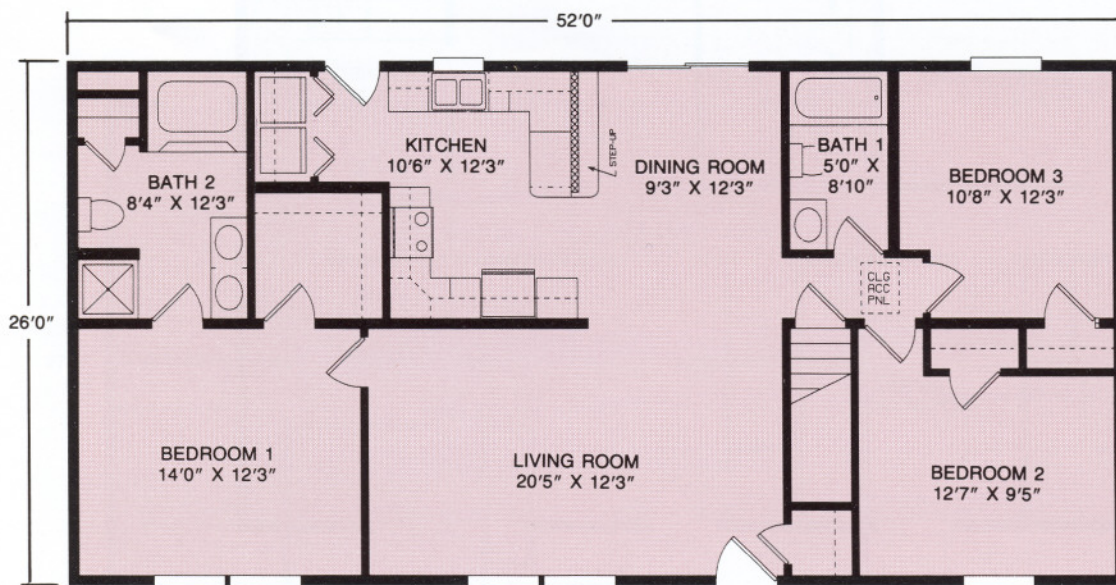
Relax in style in this home featuring master bedroom with private bath, convenient first floor utility room and spacious kitchen. Also available in 27'6" width.



The Juniata

Plan No. 264 ■ 1248 SQ. FT.

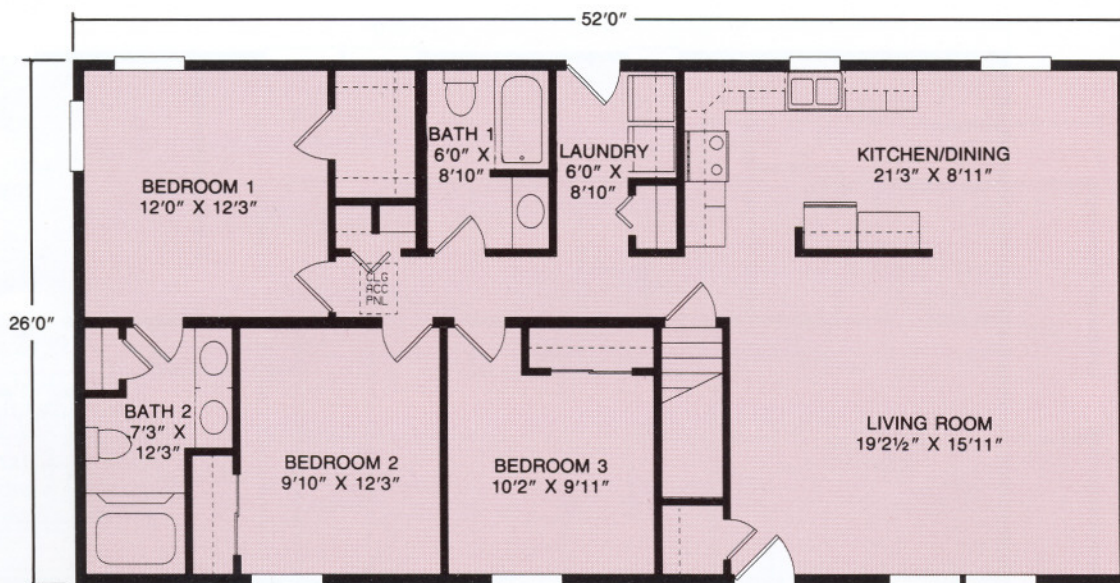
A well balanced exterior is just the beginning, as this plan's interior design flows smoothly with a central living area and a secluded master bedroom. Also available in 27'6" width.



The Ohio

Plan No. 265 ■ 1352 SQ. FT.

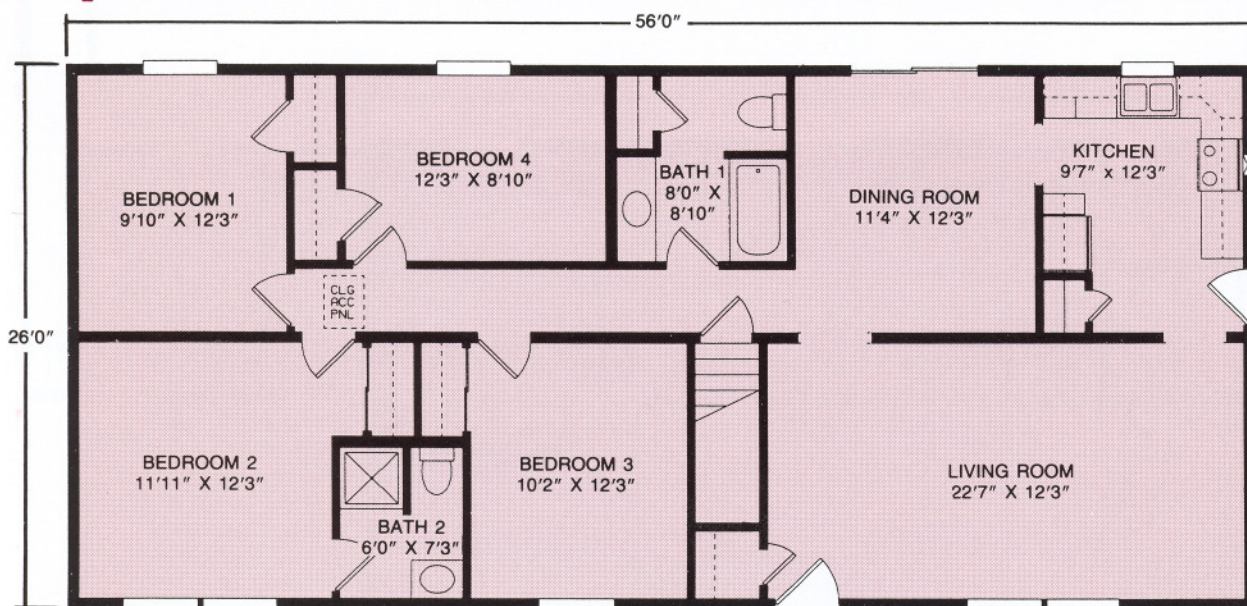
Space for living and relaxing with large master bedroom suite with adjoining bath. Utility area off the kitchen and expansive formal living room. Also available in 27'6" width.



The Schuylkill

Plan No. 266 ■ 1352 SQ. FT.

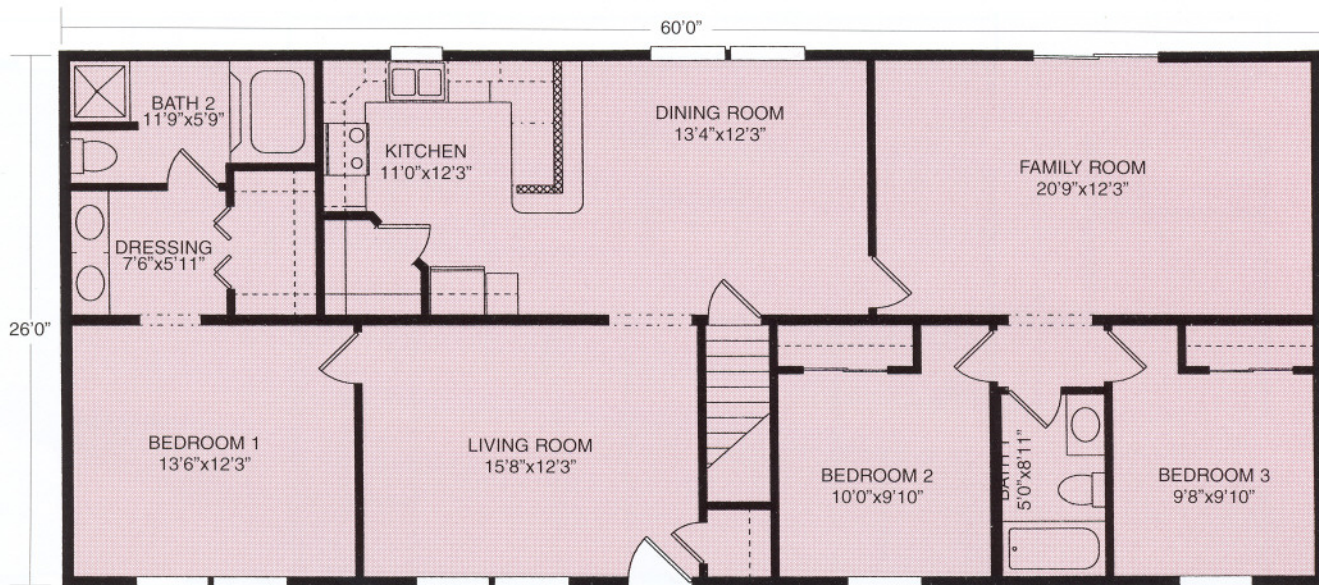
Comfortable, easy living with spacious kitchen and adjoining utility room, master bedroom suite with private bath, plus two bedrooms and additional bath. Also available in 27'6" width.



The Shenango

Plan No. 267 ■ 1456 SQ. FT.

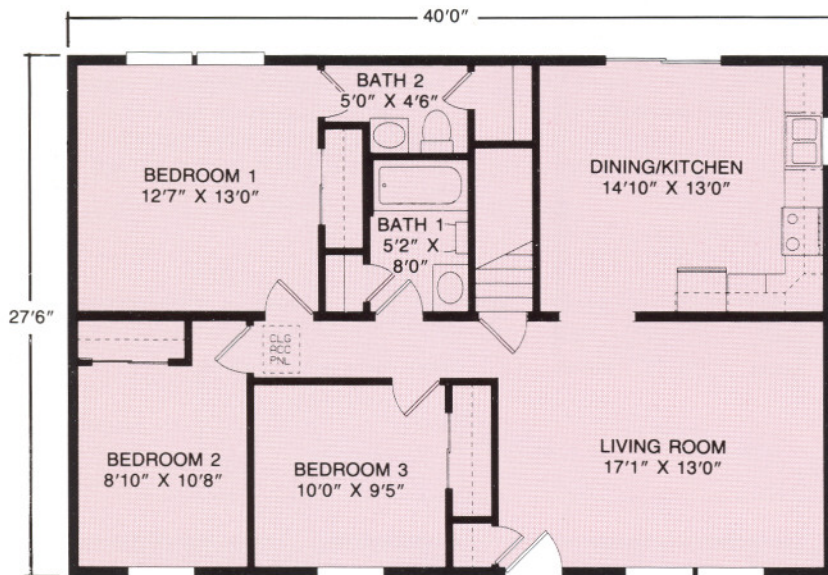
Master bedroom with adjoining three-quarter bath, two additional bedrooms, full bath, large kitchen and a formal dining room are just a few of the features of this dynamic design. Also available in 27'6" width.



The Susquehanna

Plan No. 268 ■ 1560 SQ. FT.

Spacious family living features grand master bedroom suite with walk-in closet and luxurious bath, spacious family room makes this home perfect for the family who enjoys additional space. Also available in 27'6" width.



The Bedford

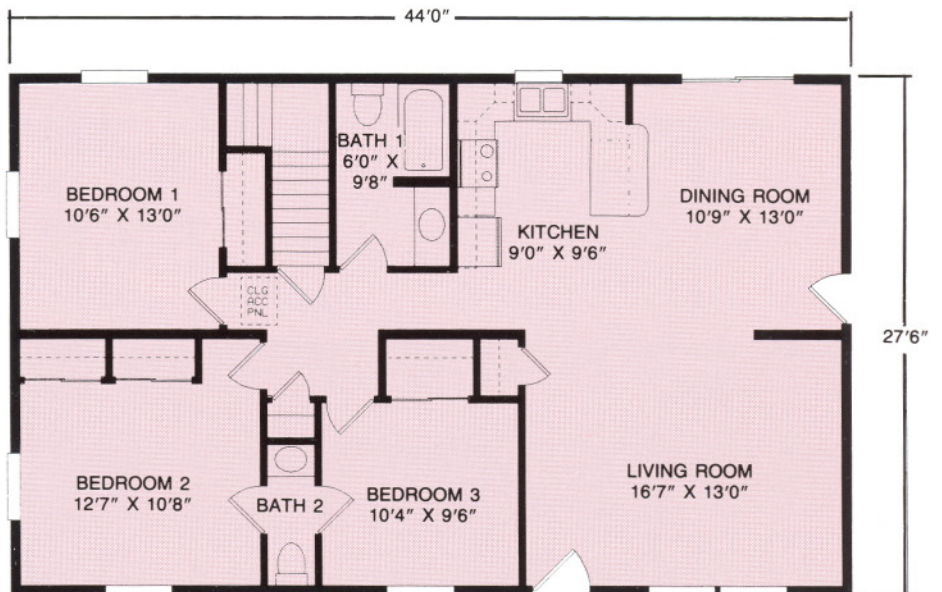
Plan No. 382 ■ 1100 SQ. FT.

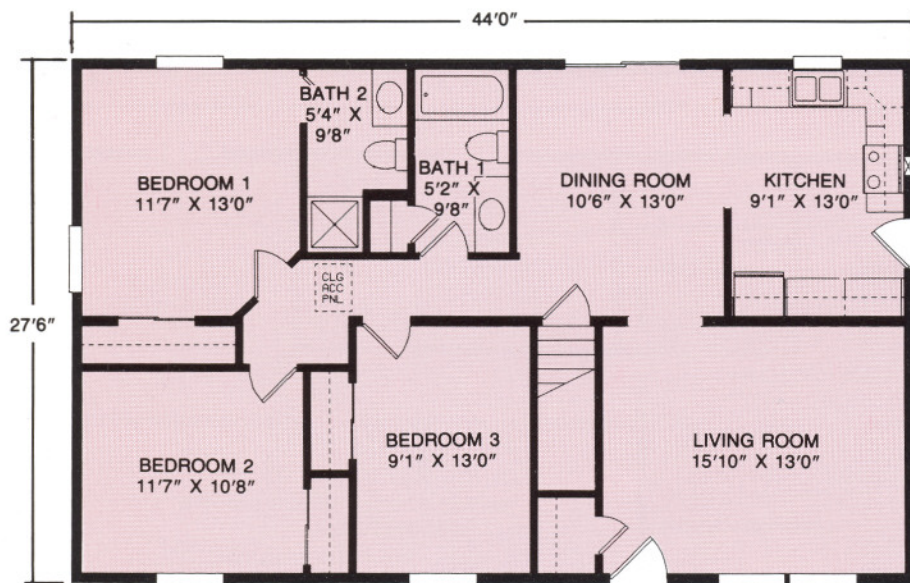
A perfect starter or move down home featuring three bedrooms, full bath with half bath off of the master bedroom and large kitchen/dining area.

The Canton

Plan No. 383 ■ 1210 SQ. FT.

Special features of this design include one and one half baths with access to half bath from two bedrooms and a wide open area between kitchen, dining and living room.



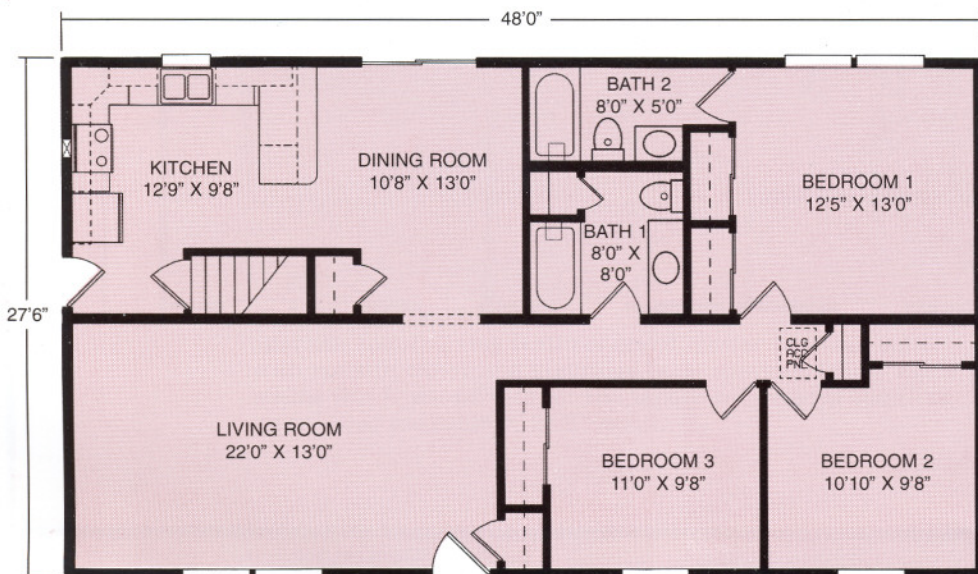
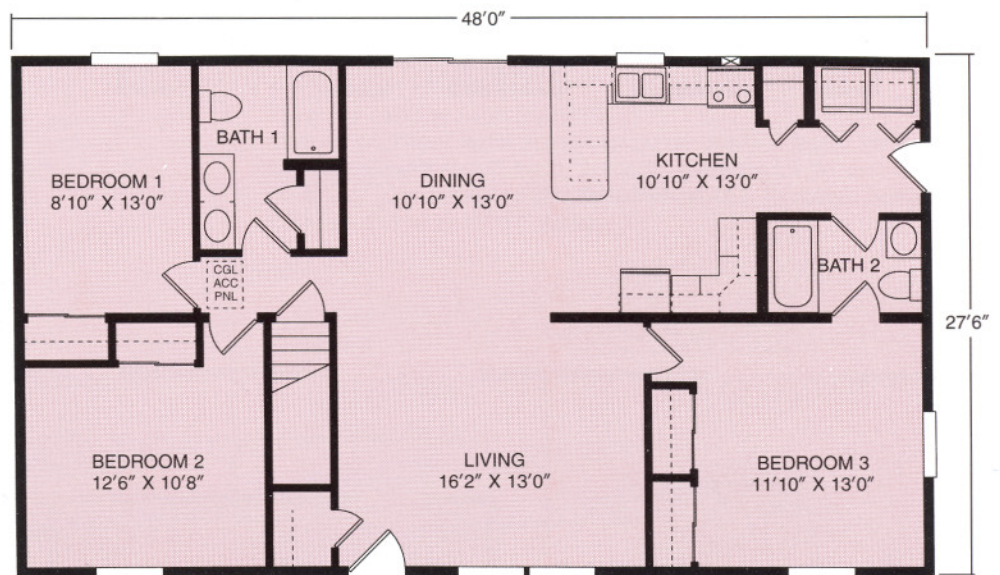


The Erie

Plan No. 384 ■ 1210 SQ. FT.
Featuring master bedroom suite with adjoining three quarter bath, two additional bedrooms, a full bath and a formal dining room.

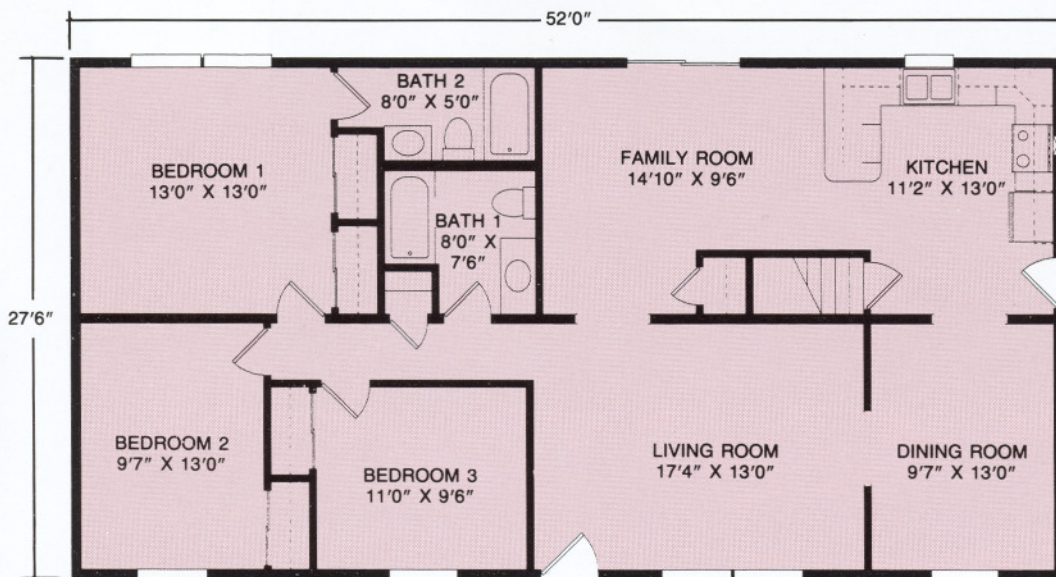
The Greensburg

Plan No. 385 ■ 1320 SQ. FT.
Spacious and welcoming, featuring kitchen with breakfast/snack bar and convenient utility closet, master bedroom with full bath.



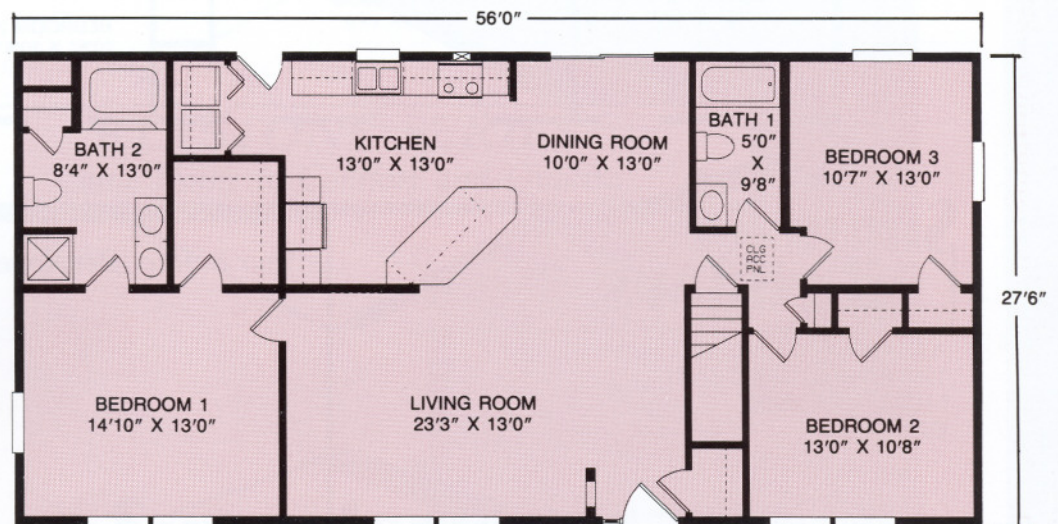
The Kingston

Plan No. 386 ■ 1320 SQ. FT.
Special features of this design include master bedroom with his and her closets and full bath, spacious living room, kitchen/dining area with snack bar.



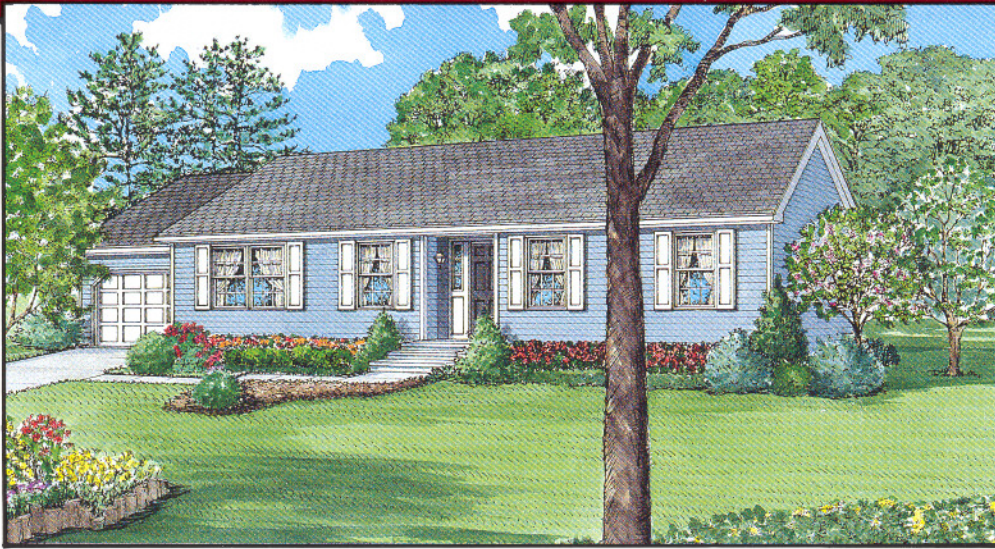
The Reading

Plan No. 387 ■ 1430 SQ. FT.
Family-style living with master bedroom with adjoining full bath and his and her closets, two additional bedrooms, full bath, large family room, and kitchen with breakfast/snack bar.



The Scottdale

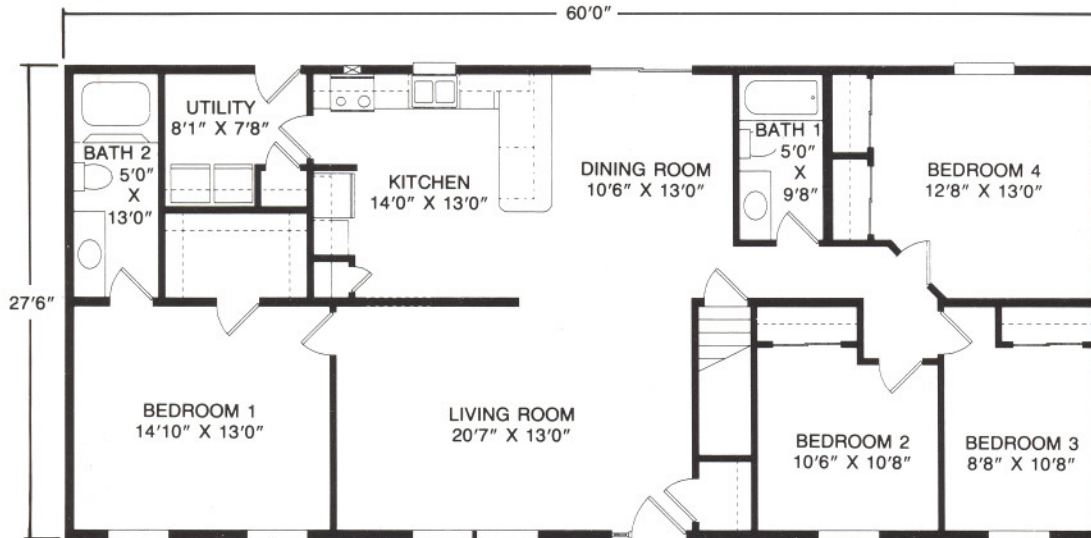
Plan No. 388 ■ 1540 SQ. FT.
Enjoy exceptional living with grand master bedroom suite with generous walk-in closet and luxurious, private bath; spacious, formal living room, and large kitchen with breakfast/snack bar.



The Scranton

Plan No. 389 ■ 1650 SQ. FT.

A home for the larger family with master bedroom with full bath, three additional bedrooms, full bath convenient utility area, large kitchen with L bar.



Superior Builders

A DIVISION OF MUNCY HOMES INC.
1565 PA ROUTE 442 EAST
MUNCY, PA 17756
(570) 546-2264

MEMBER:



THE NATIONAL ASSOCIATION OF HOMEBUILDERS

MEMBER:



Due to our continuing program of Product Improvement, Plans, Specifications, Materials and Prices are subject to change without notice.

Renderings and floor plans are promotional illustrations that approximate size and may depict optional or suggested features.

10M KBFPT 12/04

Your Builder/Developer

THE BUILDER/DEVELOPER IS AN INDEPENDENT BUSINESSMAN, NOT AN AGENT OF SUPERIOR BUILDERS. From time to time, Builder/Developer may perform service work at the request of Superior Builders, but in doing so Builder/Developer is still an independent contractor and is alone responsible for the quality of his work. SUPERIOR BUILDERS SHALL HAVE NO RESPONSIBILITY OR LIABILITY FOR ANY ACT OR OMISSION OF BUILDER/DEVELOPER OR ANY MATERIAL PROVIDED BY BUILDER/DEVELOPER, UNDER ANY CIRCUMSTANCES.